

*Celestial*  
ELEVATORS  
BESPOKE SOLUTIONS

INNOV  
ATION  
IN MOT  
ION



# Elevating Life With Celestial : **Innovation In Motion**

At CELESTIAL, we are not just an elevator company; we are architects of aspiration, builders of dreams, and stewards of trust. Our journey is powered by four unwavering forces that steer our course and define our purpose.

## **CELESTIAL - INNOVATION IN MOTION**

CELESTIAL is more than an elevator; it's the embodiment of trust, passion, innovation, and excellence in motion. We don't just move you; we elevate your life, one floor at a time. Welcome to a world where your ascent is our art, and every ride is a testament to our relentless pursuit of perfection.

---

## **CELESTIAL - Where Innovation Takes You Higher**



# OUR SERVICES



## 1. Elevator Installation

Service Excellence from Ground to Sky - Elevate Your Home with Precision.



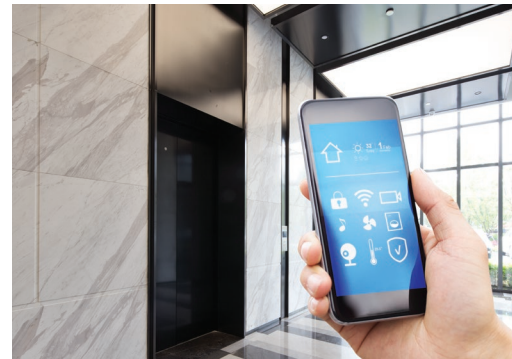
## 2. Customization Solutions

Your Elevator, Your Vision - Elevate with Personalized Elegance.



## 3. Maintenance & Support

Elevate with Peace of Mind - Our Commitment to Your Elevator's Lifelong Journey.



## 4. Smart Home Integration

Elevate Your Lifestyle - Seamlessly Connect Your Elevator to Your Smart Home.

# OUR SERVICES



## 5. Elevator Modernization

Elevate to the Future - Enhance Performance, Safety, and Aesthetics.



## 6. Commercial Elevators

Elevate Efficiency - Vertical Mobility Solutions for Your Business.



## 7. Consultation & Design Services

Elevate Your Ideas - From Concept to Craftsmanship, We Bring Your Vision to Life.



## 8. Elevator Safety & Compliance

Elevate with Confidence - Ensuring Safety Standards for Every Ride.

# WHY US

## ELEVATE YOUR EXPECTATIONS WITH CELESTIAL

01

### UNMATCHED QUALITY

Our elevators are a testament to uncompromising quality, crafted with precision and attention to detail.

02

### INNOVATION AT THE CORE

Innovation is in our DNA, driving us to create elevators that redefine the industry's standards.

03

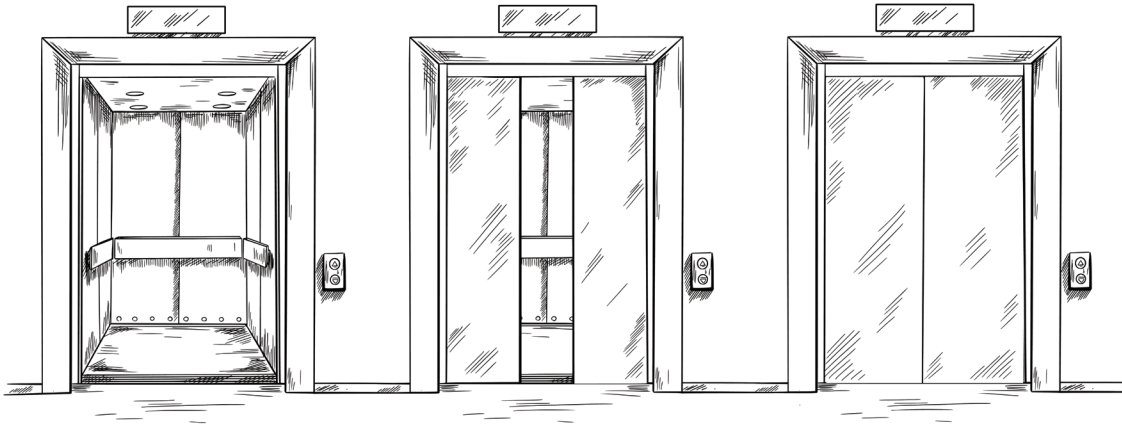
### PERSONALIZATION BEYOND COMPARE

We believe in elevating your uniqueness. Our customization options ensure your elevator aligns with your distinct style.

04

### TRUSTWORTHINESS

For us, trust is not just a word; it's a commitment. Our clients trust us with their homes, and we honor that trust with integrity.



## FROM SKETCH TO REALITY





# DRIVEN BY TRUST

Trust is the cornerstone of our foundation. It's the unwavering belief that our clients place in us as they invite us into their homes and lives. We understand the weight of that trust, and we honor it with uncompromising integrity, transparency, and reliability. With CELESTIAL, trust elevates higher.



GARAGE STACKER



GOODS ELEVATOR



CAR ELEVATOR



TURN TABLE

# DRIVEN BY PASSION

Passion fuels our innovation. It's the burning desire to create elevators that not only elevate you physically but touch your soul. Our team's relentless passion drives us to push the boundaries, to explore the extraordinary, and to craft elevators that reflect the artistry of your desires.



# DRIVEN BY INNOVATION

Innovation is our heartbeat. It's the spark that ignites the future. At CELESTIAL, we marry cutting-edge technology with visionary design, creating elevators that redefine vertical mobility. We are the architects of change, making the impossible, possible. With CELESTIAL, innovation propels you skyward.



# DRIVEN BY EXCELLENCE

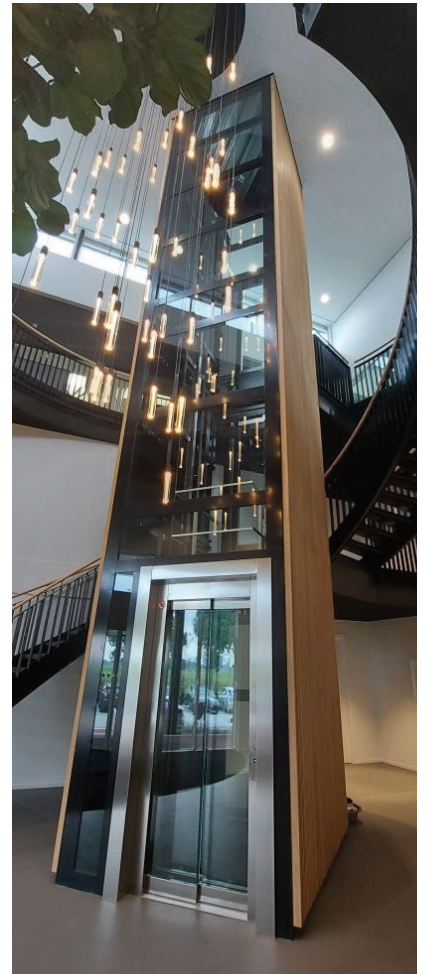
Excellence is our commitment. It's the pursuit of perfection in every detail, in every ride, in every moment you spend with our elevators. We demand excellence of ourselves, and we deliver it to you. With CELESTIAL, excellence is your constant companion.













# Celestial

ELEVATORS  
BESPOKE SOLUTIONS

 Premises 101 , B-47, Paramount, 1st Floor,  
New Link Road, Andheri West, Mumbai:- 400 053

 [www.celestialelevators.com](http://www.celestialelevators.com)

---

 98200 27705 / 98200 38649  [sales@celestialelevators.com](mailto:sales@celestialelevators.com) / [info@celestialelevators.com](mailto:info@celestialelevators.com)